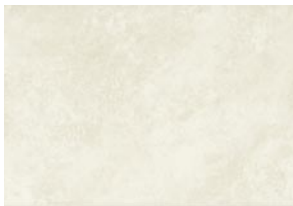


Formations Shale



613278 Shale
400 x 300 x 10mm
SHLE1A



613279 Shale
300 x 200 x 10mm
SHLE1A



613280 Shale Scored 1
300 x 200 x 10mm
SHLE1E



613281 Shale Mosaic 2
300 x 200 x 10mm
SHLE1A



613285 Spine Border
300 x 200 x 10mm
SPNE1B



	YES	NO
Domestic	●	
Commercial	●	
Monoporosa	●	
Bicottura		●

	YES	NO
Cusioned Edge	●	
Rectified Edge		●
Satin	●	
Gloss		●
Coordinating Floors	●	